



Southampton City Council

National Headquarters Competition For Great British Railways



1. Context - Vision

Southampton City Centre will transform into a series of world class connected civilised streets and spaces which is people focused creating a high-quality liveable place.

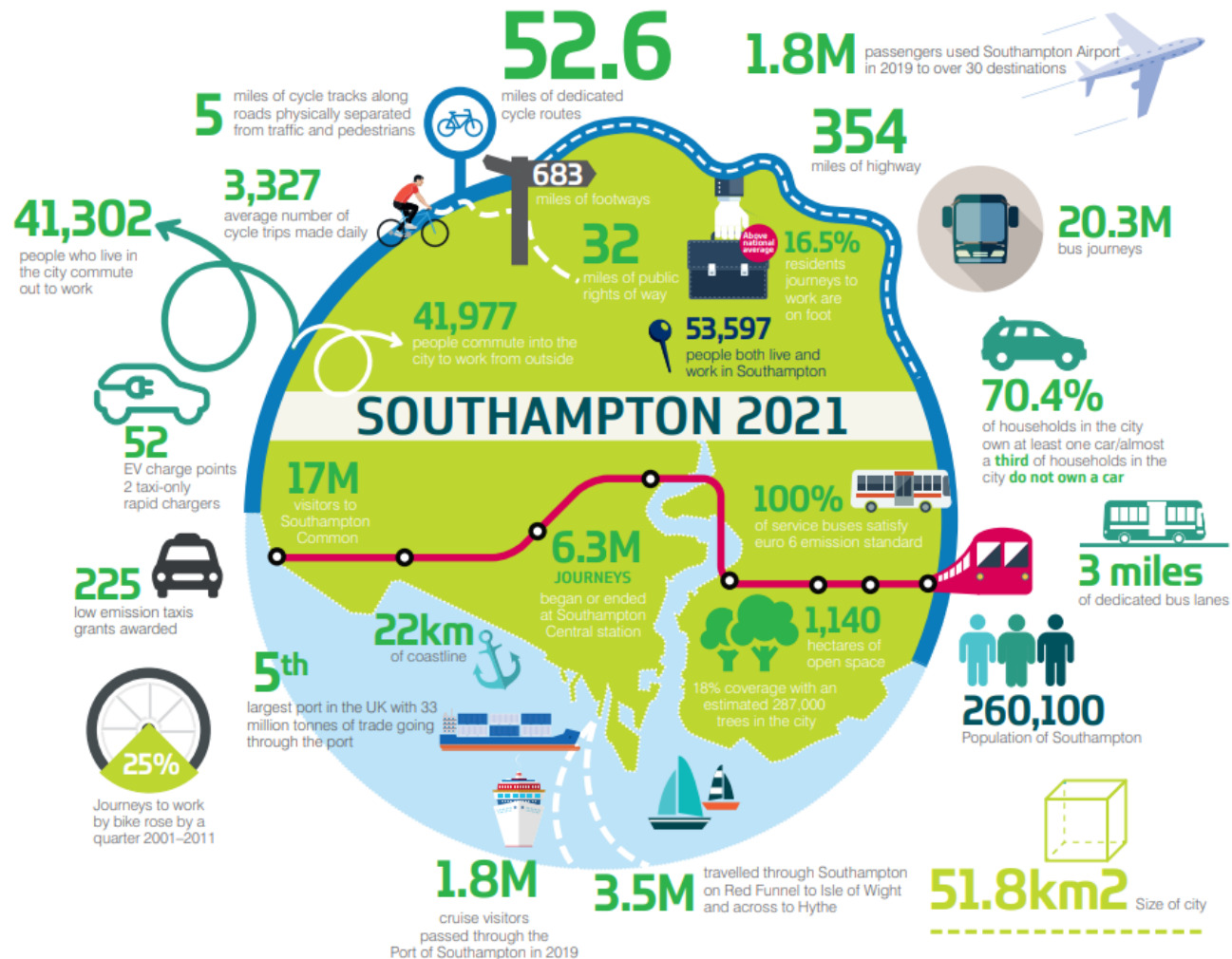
A first-class public transit system will connect to its key retail and leisure destinations as well as a network of walking and cycling routes that will encourage people to actively explore the historical heritage, cultural and natural assets Southampton has to offer.

- Over the next eighteen years Southampton will be transformed with our bold and ambitious plans that will change the look and feel of the city.
- These plans will increase the number of people wanting to work and live here. To support this a well-functioning transport system is important for Southampton's future success. This growth and transformation provides us with the opportunity to plan and invest in better and innovative transport infrastructure.

Southampton has ambition to be a major international city and the city will need to respond to economic growth as it attracts continued world class development.

- Southampton, located on the South Coast of England and just 75 miles from London, is recognised as a city full of opportunities and is the leading container and cruise port in the UK.
- PwC's Good Growth for Cities 2020 index places Southampton in the top three cities in England in terms of growth. This strength has enabled the city to establish an outstanding reputation as a great place to do business and has attracted nationally and internationally significant businesses.
- If Southampton was selected as the location for GBR HQ it will become a key driver for some of our city centre regeneration schemes and contribute to boosting employment opportunities. Southampton also has ambitious future plans, not just in redevelopment and regeneration but also culturally, as demonstrated with the recent announcement it has been long-listed to become UK City of Culture 2025.

Where we are today...



2. Levelling Up

In a joint initiative, Southampton City Council and University of Southampton have undertaken a research project on Levelling Up, one of the key policy agendas of the current government. This work includes a White Paper briefing and a final policy report.

The Council has strong strategic partnerships to deliver on Levelling Up opportunities. A partnership approach to growth has been established in the 'Southampton Economic Growth Strategy'. From this basis the Council can engage with businesses, FE/HE institutions, and other partners to demonstrate collective buy-in for its Levelling Up objectives.

We are committed to deliver our aspirations for investment, development, and growth in the Solent and South-East where integrated land use and infrastructure planning will be vital to the success of the region and levelling up. A strong voice together we can work with partners, including Network Rail, National Highways, ABP, and TfSE, to lobby Central Government and bid for new and continued investment in infrastructure that will support the delivery of sustainable growth.

Levelling Up

From building cohesive partnerships a foundation will be built for delivering objectives and in optimising opportunities. It is anticipated that from this collaborative approach based on **three key priorities** will address key challenges in Southampton and that align with the government's Levelling Up agenda.

These are:

- Strong Foundation in Early Years
- Enterprise and investment
- Infrastructure for opportunity

This should mean wherever you live and whatever your background you can be part of Southampton's inclusive, cohesive and varied communities.

Southampton becomes the location of choice; for growing business, events, hospitality and tourism whilst improving lives and opportunities through work and skills. All of which will directly and indirectly support the relocation of British Railways HQ if Southampton is its chosen new home.

Levelling up .. making a difference

- Supporting new homes and new communities, and embedding opportunities for culture and communities to thrive
- Southampton is 55th most deprived local authority in UK, with significant social and economic inequalities compared to surrounding Hampshire
- Harnessing and celebrating innovation in our city to deliver our Net Zero ambitions, supported by a cultural programme that brings Southampton's science, technology, engineering, arts and mathematic innovations to the fore
- The Freeport bid will focus on our key international trade and position us as a gateway to the world, building on our maritime heritage
- Our heritage from celebrating and recognising our archaeological foundations to connections with communities and places across the world, Southampton is also a historic city of sanctuary where over 149 languages are spoken today
- The improvement of health and wellbeing should be available for all residents and workers in the city

Proposed location for Great British Railways' national headquarters



Station Quarter

The proposed location for GBR's HQ in Southampton is in the Station Quarter area of Southampton City Centre.

Station Quarter is a major regeneration project, centred on Southampton Central station, which services over 6.3m people, with the potential to significantly boost the city as a whole as part of a long-term master plan for Southampton City Centre.

Key benefits of the Station Quarter regeneration project:

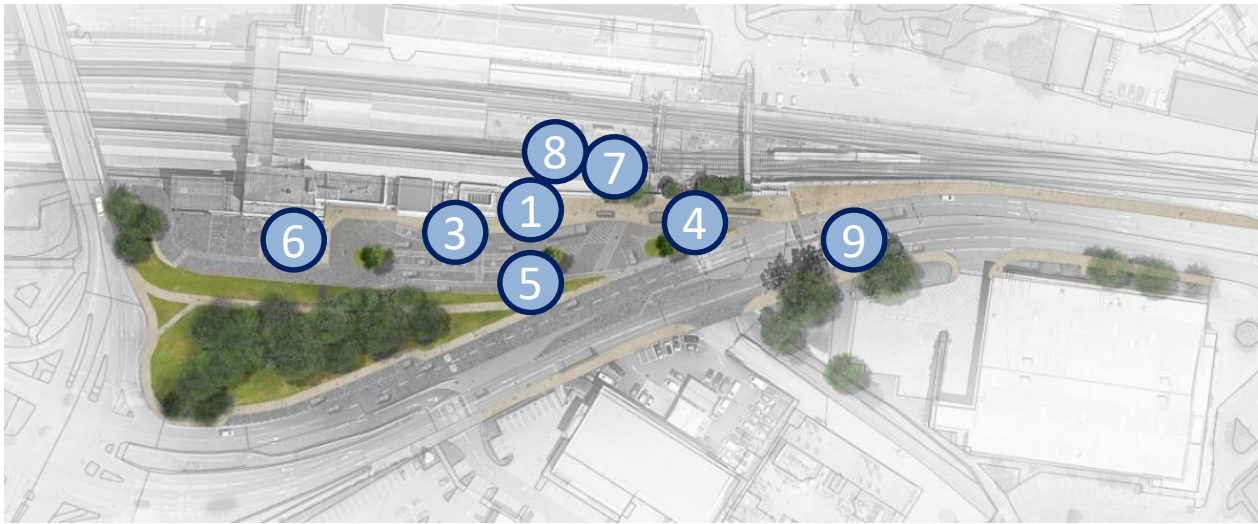
- Significant new investment in Southampton – supporting our economic recovery,
- Supporting the Levelling-Up agenda through creation of new accessible jobs, commercial space, hotel and offices;
- Redevelopment and reinvigoration of the main transport gateway to Southampton with enhanced public realm and interchange to enhance the arrival into the City Centre;
- Provision of hundreds of new homes to help meet Southampton, and South Hampshire's housing targets providing sustainable live-work opportunities; and
- Retail, restaurant and café units to activate spaces and routes through into the City Centre and beyond to the Waterfront.

Central Station Transport Hub (Transforming Cities)

Being delivered through TCF, a new transport hub and interchange on southside of Southampton Central Station to act as gateway to City and Port

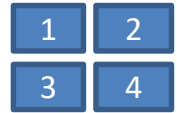
Features

1. Station Plaza
2. International Maritime Promenade (connection to proposed Maritime Gateway development)
3. Bus Interchange
4. Taxi rank
5. 20min parking
6. Electric Vehicle Charging
7. Mobility Hub – scooters, ebikes etc
8. Cruise Passenger Terminal
9. Pedestrian-Cycle Crossings



Public Realm To Date SCC Schemes

1 Kingsbridge Lane
2 Station Quarter North
3 Guildhall Square
4 Holy Rood QE2 Mile



Public Realm To Date Developer Schemes

- 1 West Quay Esplanade
- 2 Back of the Walls
- 3 Bow Square

1

2

3



Bargate Development



Maritime Gateway



2,700 homes, 30,115m² commercial and 524 hotel rooms

**Nelson
Gate**



Leisure World



Future Developments

TOTAL DEVELOPMENT MIX



3,100 units



2,830m²



16,565m²



16,720m²



Proposed City Streets Schemes

1. Bargate Square
2. Queens Way & Hanover Square
3. Bernard Street
4. Albion Place Transport Hub
5. Saints Mile Axis
6. East Park Terrace
7. Portland Terrace
8. Northern Ring Road junction improvements
9. Central Station 1
10. Mayflower Park
11. Western Esplanade South
12. Guildhall Square

Proposed and Potential New Development

- a. Bargate Quarter
- b. Chapel Riverside
- c. Maritime Gateway (TRU)
- d. Nelson Gate
- e. Leisure World
- f. Debenhams
- g. Lime Street
- h. Northam Gasholders
- i. College Street Box Park

Proposed Schemes and Development 2022-2025



Improve the look and feel of the City Centre by continuing to enhance the public realm so it is welcoming, accessible, clean, attractive and safe place to be always.

Improvements to key walking and accessibility routes that come into the City Centre particularly where they cross or go around the Ring Road by reducing the number of interactions.



Continue the changes at and around Southampton Central Station to create a gateway to Southampton and a multi-modal interchange as a hub for coaches, Mass Rapid Transit, taxis and cycling. Create coherent way following links from the station to City Centre, West Quay and Port. Improve quality public transport serving the city centre with well-located bus stops and priority routes.



Public transport can access the core of the City Centre with priority to deliver people where they want to go easily. A loop of roads will be primarily focused on buses with high quality waiting areas and bus only sections.



The City Centre will become zero carbon creating the right environment for people to enjoy major events and informal gatherings - a liveable city.

3. Connected and easy to get to

Southampton is connected via railway links across the country as well as via the motorways, it also has very accessible successful regional airport.

Direct Railway links from Southampton include -

Bristol, Cardiff, Gatwick Airport, Birmingham & the North, Bournemouth-Weymouth, South Coast (Portsmouth, Brighton), London Waterloo (1 hour 20 minutes making the city a popular commuter hub) & London Victoria

Southampton Airport currently flies to 22 destinations and growing with 8 airlines operate and are increasing including British Airways

Ferry connections to the Isle of Wight (Cowes)

Further support is provided via the National Express coach network and underpinned with links via Southampton's international Port.

Network Rail also owns a land around Southampton Central Station and will be key partner in the development of the Station Quarter

The Southampton's relationship with the rest of the UK

Southampton is crucial to the UK economy and is the nation's major international gateway for people and business. The Port of Southampton is one of the largest international gateways and sees £71 billion of international trade each year and is the principal port for the automotive industry, is the UK's (and northern Europe's) busiest cruise port.

Significant business, freight and tourist flows pass through Southampton to reach London, the rest of the United Kingdom (and Ireland). The road and rail routes that connect South Hampshire to the Midlands and North of England are particularly important for freight. The key corridors for each mode are:

- For road: The M3/A34/M4 between Southampton and the Midlands/West of England
- For rail: The Southwestern Main Line/ Basingstoke – Reading Line between Port of Southampton and the Midlands – particularly for automotive exports. There is an important freight interface on the A34 corridor, which connects the Port of Southampton with the Midlands and North of England.

4. Opportunities for Great British Railways

- [Transport for South East](#) are the sub-national transport body are a wider transport partnership who have an interest and stakeholder in rail which is looking at better connectivity pan-Solent and then wider connections to London, along the coast to Brighton and Bournemouth and the Bristol area.
- [Solent Transport](#) a joint partnership between Southampton, Hampshire, Portsmouth & Isle of Wight on strategic transport linking with land-use planning, strategic modelling and partnership working
- Southampton is a key part of the [Solent Future Transport Zone](#) programme. The launch of the MaaS product in the Spring will be one of the first multi-modal multi-operator system in England so puts us at the forefront of innovation and has been trumpeted by DfT as part of their investment in buses.
- Northam Rail Bridge is an investment in rail infrastructure. NR are doing a Freight Strategy and working with National Highways on wider freight considerations and freight access to the Port from the Midlands. A public consultation is expected to be held in 2022-23

- [Solent Connectivity - Continuous Modular Strategic Planning \(networkrail.co.uk\)](http://networkrail.co.uk) - a study to investigate feasibility of getting a 'Metro' level of rail service to the Solent's stations - particularly to Southampton's local station which have a poor level of service (1 train per hour) and looking at ways to increase the frequency and what the necessary infrastructure is required.
- Waterside Rail proposals being led by Network Rail and Hampshire County Council (HCC) to reinstate services to Marchwood and Hythe linked to Solent Freeport as part of DfT's Reopening Railways Fund.
- While Southampton has good links to London the local services are lacking and the CSMP, Waterside Rail and subsequently the council are taking a lead, with Hampshire County Council, on development of the Southampton Metro elements across the city to provide more connectivity and a greener solution of transport into the city and around it.
- Rail forms part of an ambitious multi-layered public transport system in Southampton including regional Metro rail, urban MRT, rapid bus, local bus and demand responsive transport.

Opportunities for Great British Railways

The Transportation Research Group (TRG)

- The Transportation Research Group (TRG) is one of the UK's longest established and leading centres for engineering-related transport teaching and research. It was established at the University of Southampton in 1967 and is based at the University's Boldrewood Innovation Campus.
- Research in TRG is wide-ranging and aimed at helping to secure sustainable transport systems for the UK and the world. The context for the research is TRG's view of transport as a socio-technical system, capable of delivering sustainable outcomes.
- TRG's research is multi-modal, covering both passenger and freight transport, whilst also examining the scope for information technology to act as a complement or substitute for transport. With expertise in fundamental and applied research in traffic management and control, safety, the environment/sustainability, bus and rail operations, freight/logistics and walking and cycling

Opportunities for Great British Railways

- Southampton City Council has a commitment to support growth in the city and city region as highlighted in our City of Opportunity 2021-2025 Corporate Plan. Our ambition is to create a city of opportunity that is greener and well connected to attract inward investment and reduce carbon emissions. This will enable Southampton and Hampshire to forge new relationships both in the UK and globally, through our position as an International Gateway.
- SCC has worked in partnership with Southwestern Railway and Network Rail on several projects including public realm and transport interchange works delivered at Southampton Central and in developing business cases such as Northam Rail Bridge
- The confirmation of Freeport Status will strengthen our position. To support this status, we collectively need a vision and investment in transport links that will support the 52,000 new jobs that will be created through the expansion of the Port of Southampton and Southampton Airport.
- Freightliner have a 26.5ha maritime terminal within the Port that handles trans-shipment between rail and ship – increasing in importance as Port grows
- The draft Waterside Transport Strategy has schemes that link into Southampton for road, rail, bus, and active travel. These aim to improve connectivity between Waterside (in Hampshire), Southampton, and the wider Solent region.

5. Railway heritage & links to the network

Southampton has a historical connection to the railways dating back to 1831 when a prospectus was issued for the Southampton, London and Branch Railway and Dock Company. The line which was between Southampton and London, was then extended to Bath and Bristol. Moreover, the formation of the London and Southampton Railway led to the construction of the Eastern Docks, now known as Ocean Village.

The building of the Western Docks in the 1930s was also largely funded by the rail company Southern. What is now Southampton Central railway station first opened in 1895 and prior to the pandemic was used by around 6.5m passengers each year.

In 1891 the London and Southwestern Railway (LSWR) opened a new carriage and wagon works at Eastleigh and in 1910 locomotive manufacturing transferred to the new workshops from Nine Elms in London. The works continued to produce trains and carriages until mid-1960s with the build of the first six electro-diesel locomotives for British Rail.

Railway heritage & links to the network

Today, the historic Eastleigh Railways Works, which is neighbour to Southampton Airport, form part of the Solent Freeport proposals and rail freight from the Port of Southampton. This link provides critical infrastructure for international trade. Upgrades to rail freight infrastructure supports national economic performance and reduces road transport emissions.

It has long been recognised that the railway infrastructure in Southampton plays a vital role in supporting imports to and exports from the UK.

Southampton is often referred to as the 'gateway to the world'. That said locating the Great British Railways headquarters in the city offers the potential to create a clear link with one of the most significant international trade gateways in the world.

6. Value for Money

Southampton as a city is focussed on the future and maximising the opportunities it has for business as well as its residents.

This includes:

- Making best use of sites, including land currently owned by Network Rail and across the wider Station Quarter regeneration opportunity.
- Supporting business growth and seeking to attract elements of the rail industry supply-chain to relocate to the Southampton city region.
- Ensuring development that is being undertaken such Station Quarter, will use sustainable materials to reduce embodied carbon and adopt a fossil-fuel free approach with the use of electrical power and renewable energy solutions.
- Southampton provides a solid option for recruitment with access to talent in a variety of sectors e.g. University of Southampton MSC transport course, supported by competitive wages and salaries
- Quality and affordability of living on the South Coast and within the city centre offers varied options to employees.

7. Public support

The Three Rivers Rail Partnership, a group of local authorities, local people and the rail industry. Working to promote our train and local bus services, and doing what we can to improve our stations, connectivity and services.

The rail routes which the partnership covers run alongside, or cross the Avon, Itchen and Test rivers – hence ‘Three Rivers’.

The activities incorporate the Department for Transport’s Community Rail Development Strategy’s 4 pillars:

- Providing a voice for the community
- Promoting sustainable, healthy and accessible travel
- Bringing communities together and supporting diversity and inclusion
- Supporting social and economic development

In summary

The importance of railways to the city and region

The Great British Railways HQ will present a unique opportunity for Southampton to be at the heart of delivering Great British Railways's ambitious programmes in all parts of the region/UK for railways.

What could this mean for our communities in Southampton ?

- Put Southampton and the region on the map, nationally and internationally in terms of railways expertise.
- Contribute and help to drive economic recovery and accelerate growth following the pandemic levelling up a deprived part of the south
- Attract further investment and secure global competitive advantage for the city and region
- Help create new businesses and quality jobs to retain and attract talent
- Raise aspirations and new skills in the workforce
- Contribute to the further building and creation of civic pride, develop a strong sense of belonging , help to build a stronger city identity, in conjunction with enhancing and enabling community connections and wellbeing.

In summary

The importance of railways to the city and region

As a council we are and continuing to take the lead in rebuilding our communities, particularly in a post pandemic era by attracting investors and new partners, along with working with our existing businesses and training providers to ensure that there is the right pool of skills and talent are available to take advantage of new investment and opportunities.

With the right support from key employers/partners and educational establishments Southampton City Council can deliver on the ambitions we have for the diverse communities we represent.

These plans cannot be done in isolation, and we would warmly welcome the opportunity to be the new location for Great British Railways HQ and work in collaboration to achieve shared objectives in relocating the GBR HQ and then supporting any future plans for UK railways.